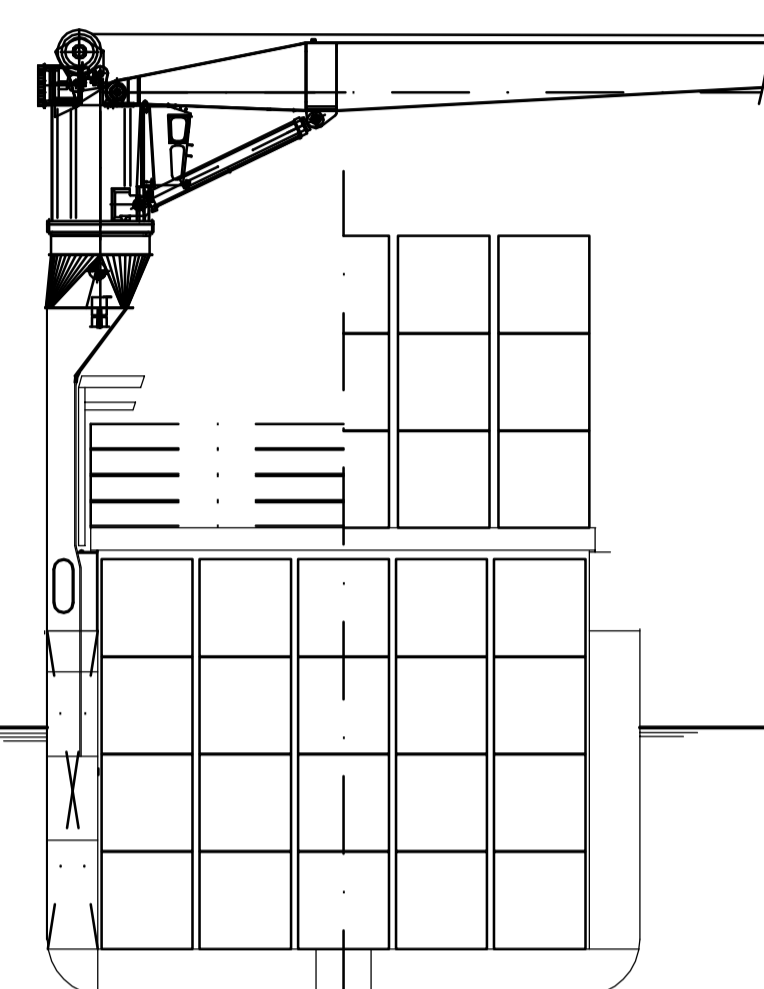
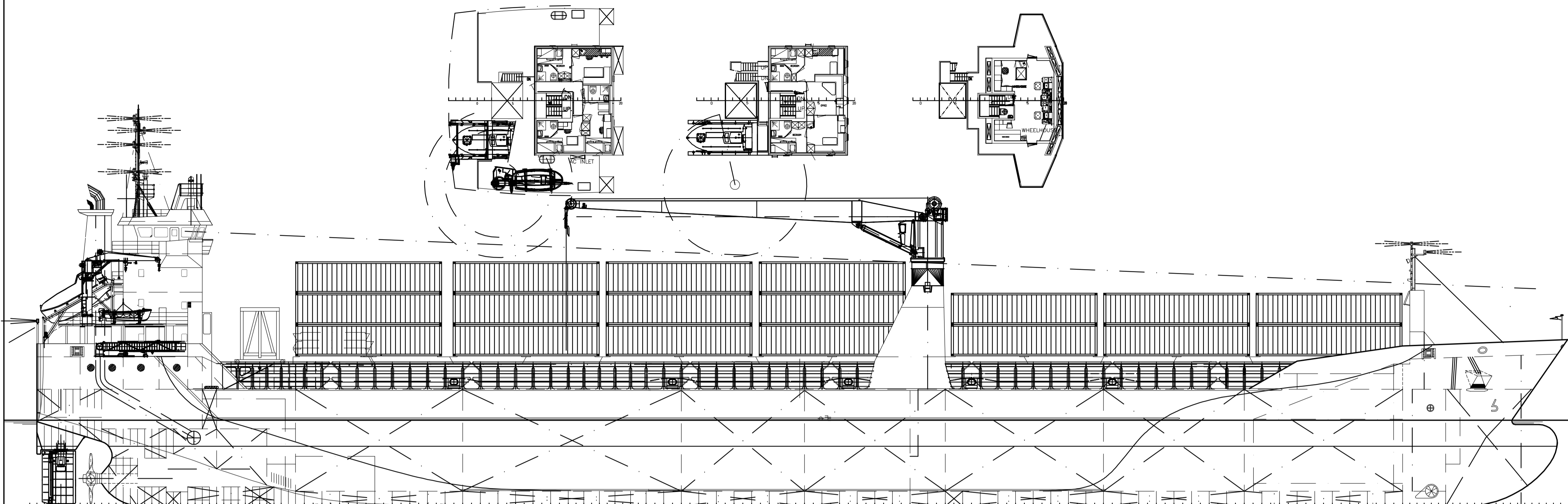


BOATDECK 15150

CAPTAINS DECK 17850

BRIDGEDECK 21050



SPACING 600 @ SPACING 735 mm

SPACING 735 @ SPACING 600 mm

POOPDECK 12450

301/28.4M 401/28M

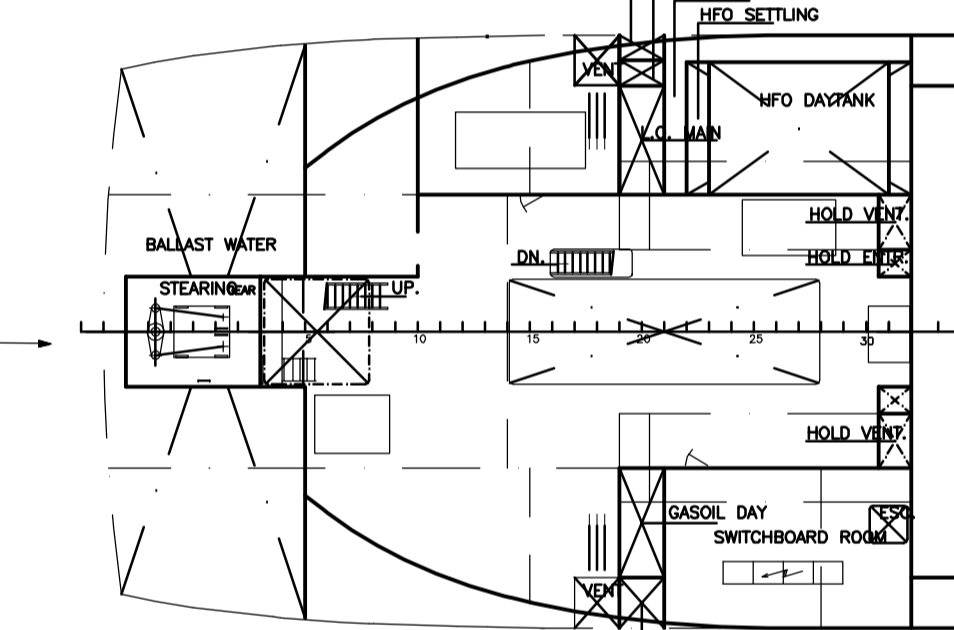
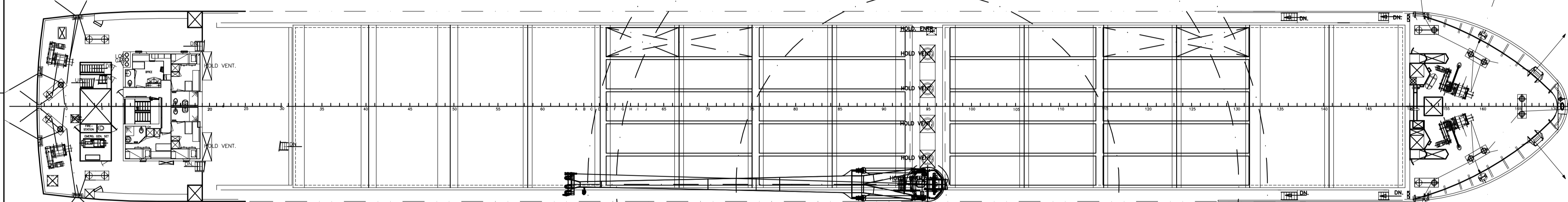
HATCHES

601/16M

401/26M 301/28.4M

FORECASTLEDECK

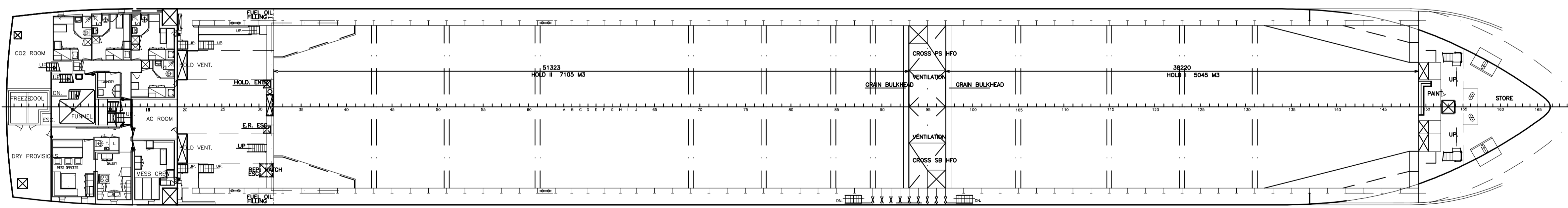
E.R. PLATFORM 6450



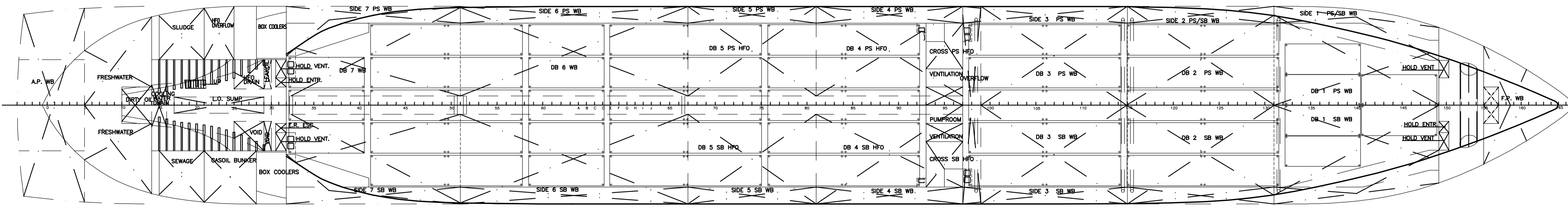
MAINDECK 9750

### PRINCIPAL PARTICULARS

Length o.a.	127.87 m
Length b.p.p.	121.65 m
Breadth mid.	15.85 m
Depth mid.	9.75 m
Draught mid.	7.446 m
Deadweight	appr. 9231 t
Capacities: Holds	appr. 12528 m <sup>3</sup>
H.F.O. incl. day-, settintank	appr. 565 m <sup>3</sup>
Ballastwater	appr. 3431 m <sup>3</sup>
Freshwater	appr. 76 m <sup>3</sup>
Gasoil incl. daytank	appr. 59 m <sup>3</sup>
Containers hold	256 TEU
Containers hatches	178 TEU
Containers total	434 TEU
Engine output	4100 kW
Speed at 4100 kW, T=7.446m	appr. 15.4 kn
Gross tonnage	5968 GT
Nett tonnage	3422 NT
Class	LRS +100A1 +LMC, UMS



TANKTOP 1250



MP	BG	04-99	BY	DATE	<b>DAMENSHIPYARDSHOOGEZAND</b>	
MP	BG	02-99	BY	DATE	Scheepswervenweg 13 PO Box 79 9600AB HoogeZand, HOLLAND Tel: 0598-380022 Fax: 0598-394863	
SCALE		1:200	OWNER			
DRAWN BY		BG	DATE		10-03-99	
APPROVED				YARD No. 0807 (ex. 0803)		
TITLE		<b>GENERAL ARRANGEMENT</b>				
ALTERATION						
No.		A B C D - - - - No. 0807 - 000 - 001				