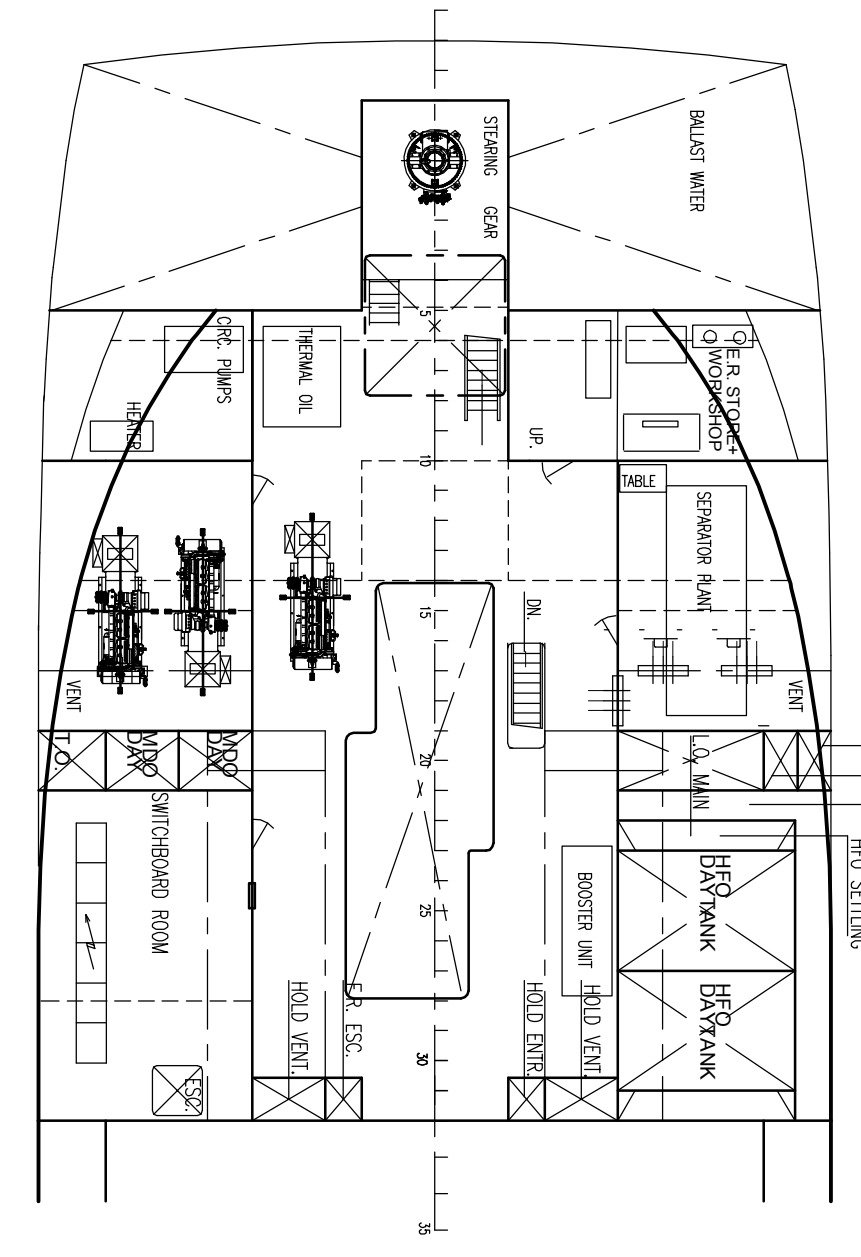
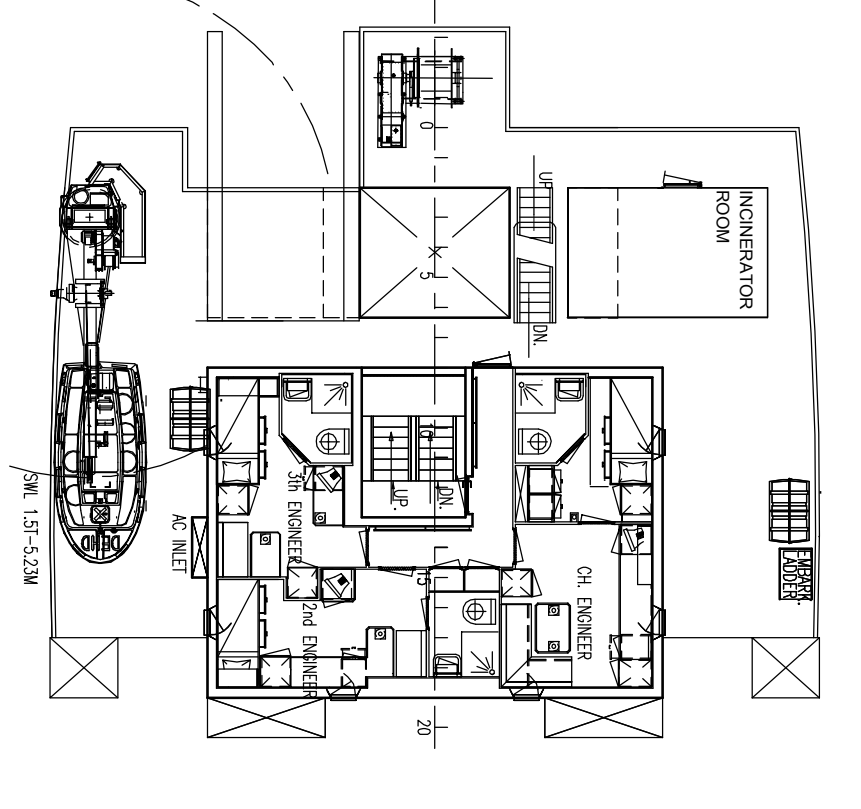


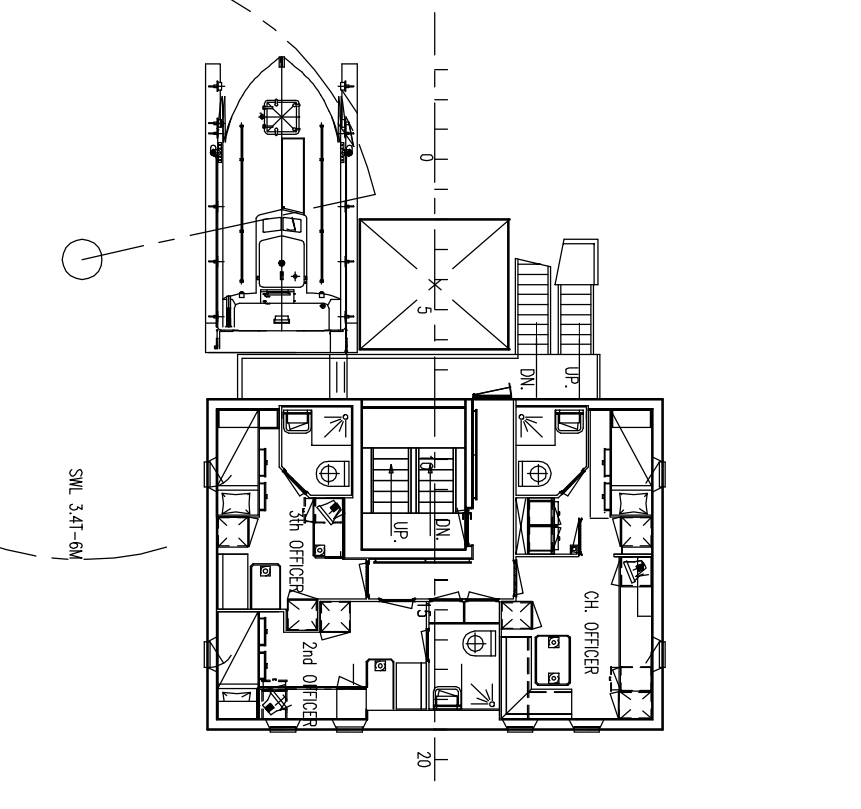
ER PLATFORM 6450



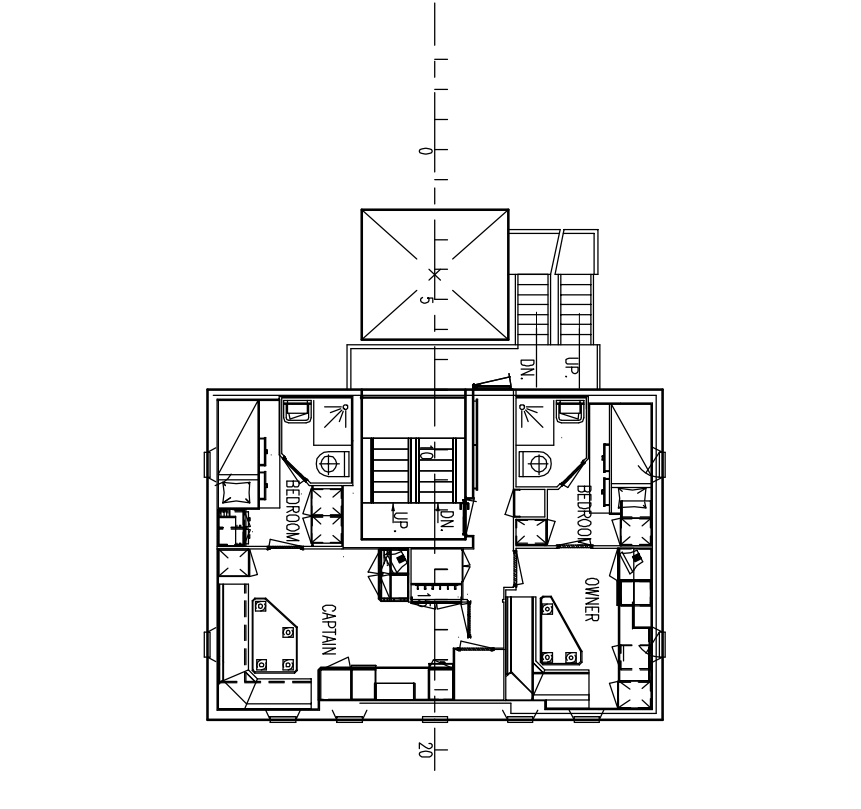
BOATDECK 15150



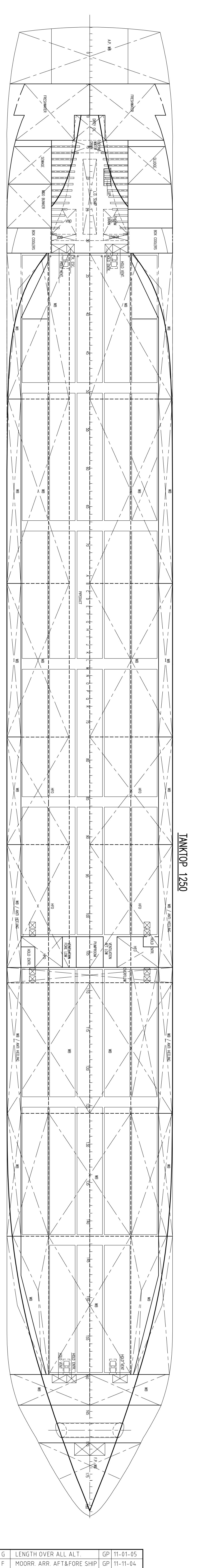
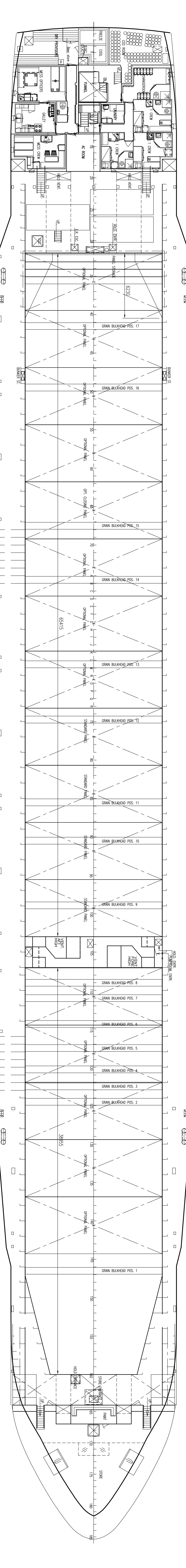
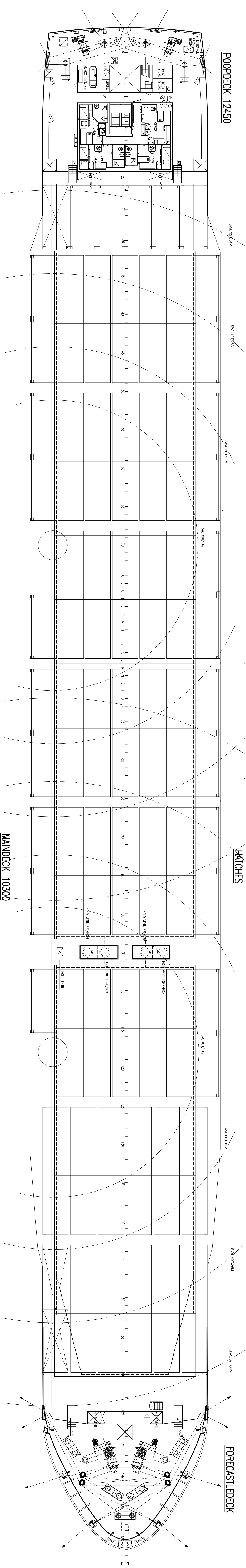
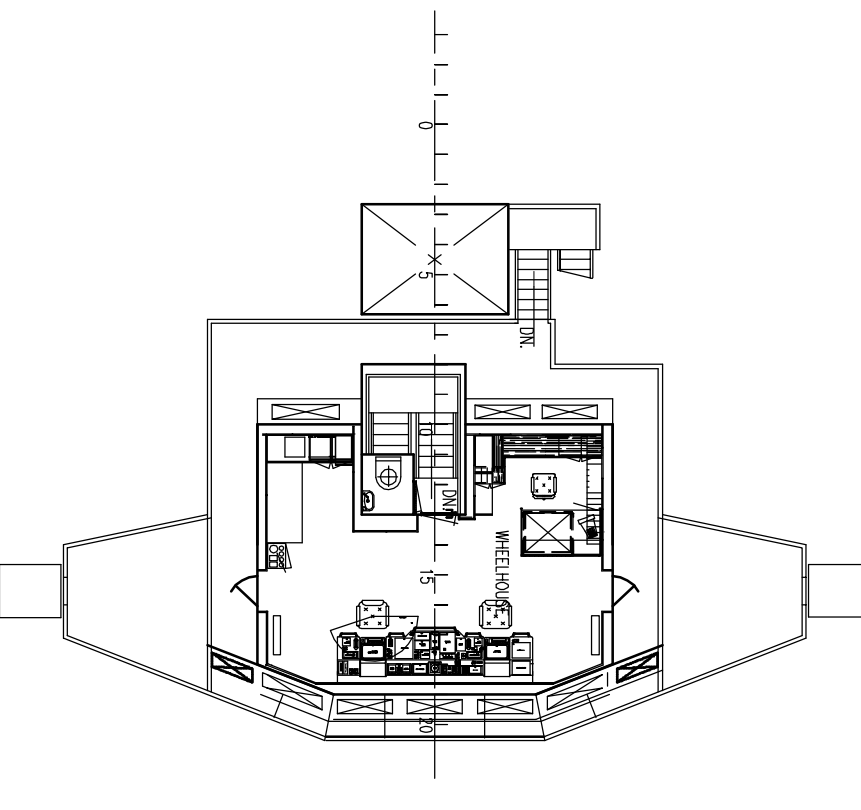
OFFICERS DECK 17850



CAPTAINS DECK 20550



BRIDGEDECK 23750



G	LENGTH OVER ALL ALT	GP	11-01-05
F	MOORR ARR AFT&FORE SHIP	GP	11-11-04
E	Arr gensets, aftmast	HJH	06-10-04
REV	ALTERATION	BY	DATE

P.O. Box 1 - 4200 AA GORINCHEM - HOLLAND
 Tel: +31 (0) 53 973 33 - Fax: +31 (0) 53 94 88
 Telex: 25255 GORIN NL

DAMENSHIPMAATSCHAP CARGOVESSELS
 TITLE: GENERAL ARRANGEMENT
 DRAWN BY: DSCV
 DATE: 11-11-2003
 SCALE: 1:50
 SHEET NO: 0840-000-001

DAMEN
 COMBI FREIGHTER 10500

Dimensions
 Length o.a. : 145.83 m
 Length l.l. : 138.82 m
 Beam mld. : 19.32 m
 Design draft approx. : 7.347 m
 Deadweight approx. : 10500 ton
 Gross tonnage approx. : 7752

Capacities approx.
 Hold 1 : 5409 m³
 Hold 2 : 9469 m³
 Total hold : 14878 m³
 Heavy fuel oil : 627 m³
 W/O : 60 m³
 Freshwater : 75 m³
 Ballastwater hold : 4867 m³
 Containers in hold : 352 TEU
 Total containers on deck : 352 TEU
 Total containers : 685 TEU

Performance approx.
 Speed 14.2 knots at 7.347 m design draft with 50% MCR output, 3888 kW
 Main engine: 4200 kW at 600 rpm.

