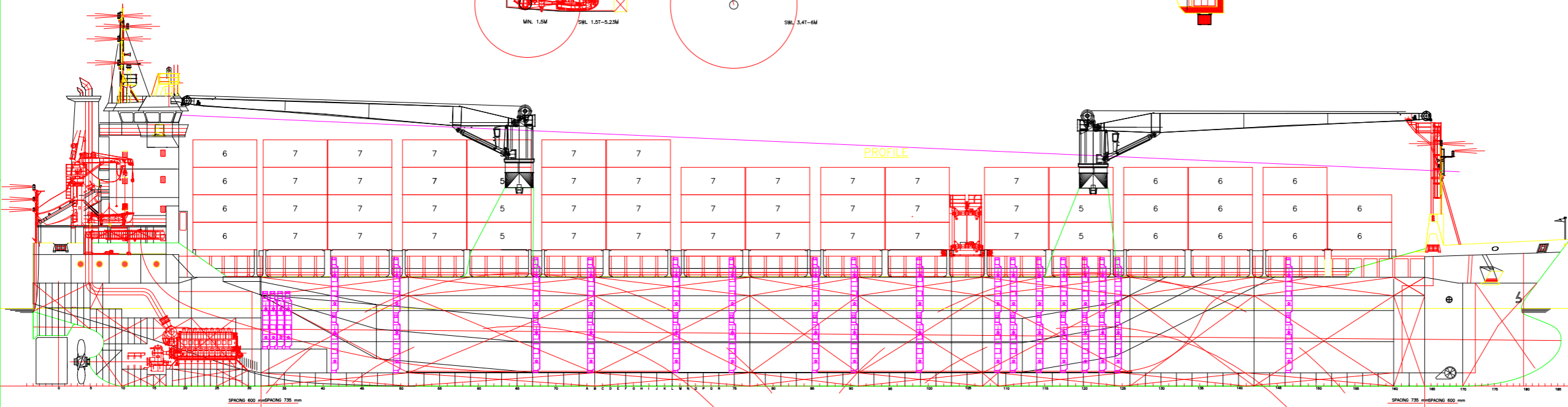
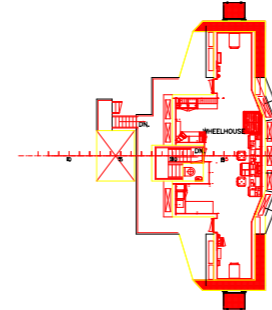
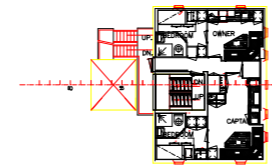
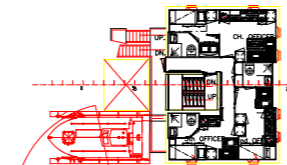
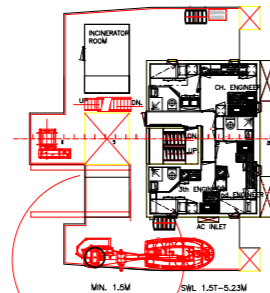


BOATDECK 15150

OFFICERS DECK 17850

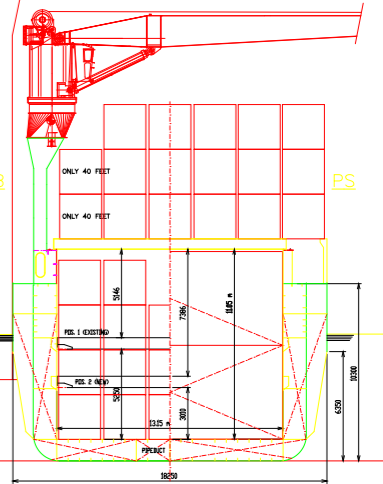
CAPTAINS DECK 20550

BRIDGEDECK 23750



PROFILE

CROSS SECTION

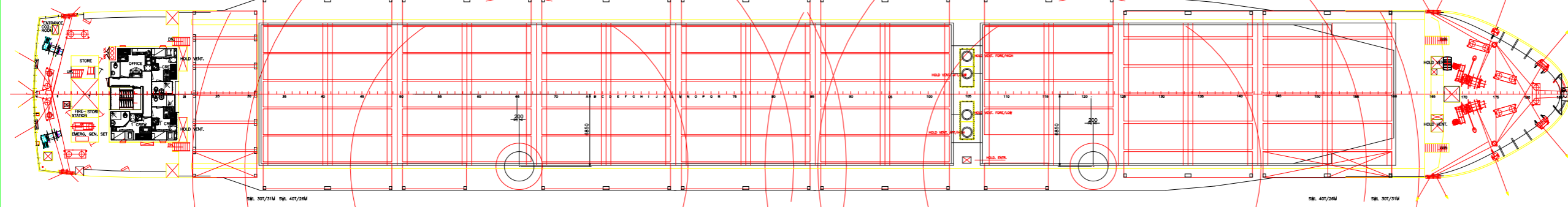


POOPDECK 12450

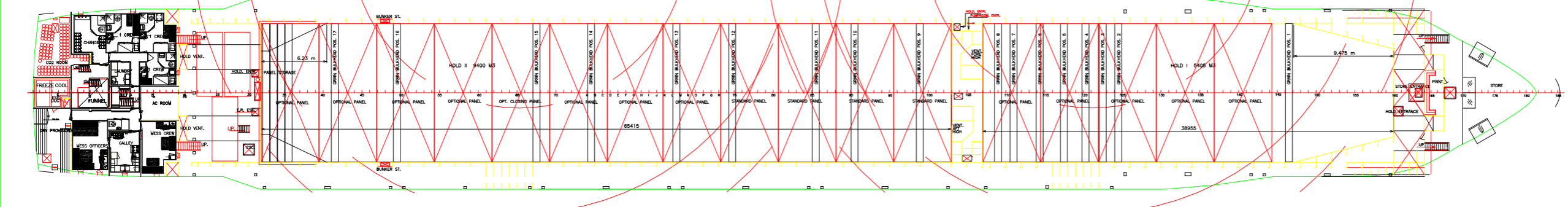
HATCHES

FORECASTLEDECK

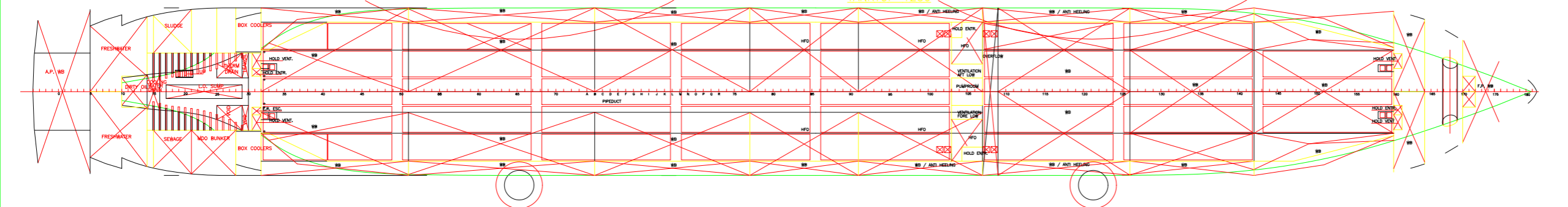
E.R. PLATFORM 6650



MAINDECK 10300



TANKTOP 1250



PRINCIPAL PARTICULARS	
Length o.a.	145.63 m
Length b.p.p.	138.82 m
Breadth mid.	18.25 m
Depth mid.	10.30 m
Draught mid.	7.347 m
Deadweight	appr. 10500 t
Capacities: Holds	incl. day- and settlings tanks
H.F.O.	appr. 14878 m <sup>3</sup>
Ballast Water	appr. 627 m <sup>3</sup>
Fresh Water	appr. 4888 m <sup>3</sup>
MDO	incl. daytank
Containers hold	appr. 60 m <sup>3</sup>
Containers hatches	302 TEU
Containers total	373 TEU
Containers total	675 TEU
Engine Output (100% MCR)	4320 kW
Speed 90% MCR full draught, no shaftgen.	appr. 14.20 kn
Class LRS +100M1 +LMC,IMS,SCM,Strengthened for Heavy Cargoes	
Container Cargoes in Hold and on Hatchcovers	
Ice Class 1A (Finnish-Swedish Ice Class Rules resolution 7/30/99)	
Gross Tonnage	appr. 7752 GT
Nett Tonnage	appr. 3841 NT

DAMEN SHIPYARDS CARGOVESSELS	
P.O. Box 1 - 4200 AA Gorinchem - Holland	
Telephone +31 183 63 99 33	
Telefax +31 183 63 94 88	
Telex 25335 damen nl	
SCALE	1 : 150
OWNER	
DATE	17-1-03
YARD No.	0838
APPROVED	
TITLE	
GENERAL ARRANGEMENT	
ALTERATION	No 0838 -000 - 001