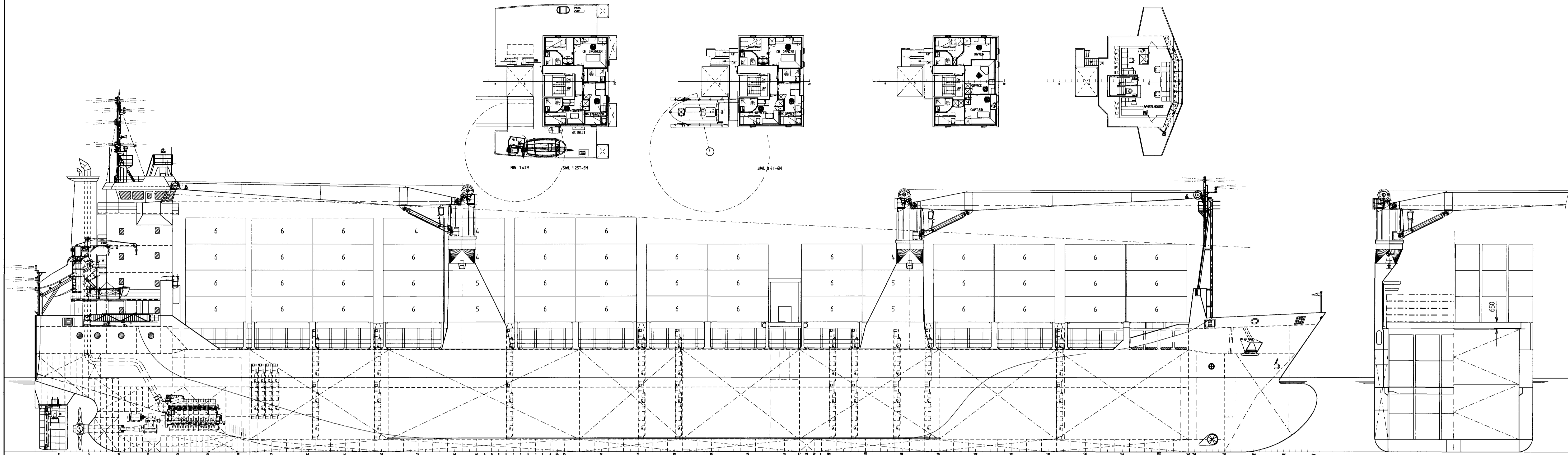


BOATDECK 15150

OFFICERS DECK 17850

CAPTAINS DECK 20550

BRIDGEDECK 23750

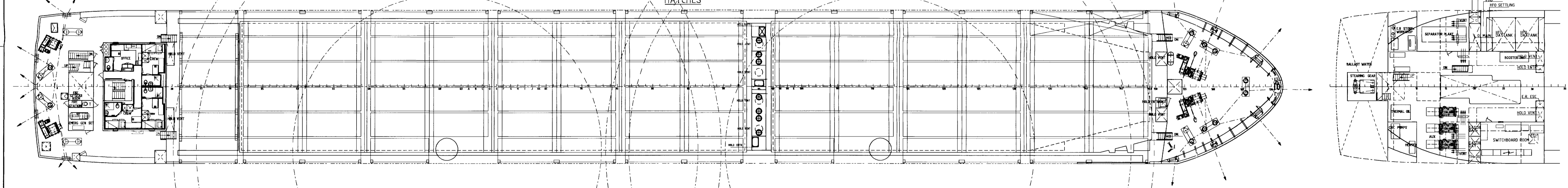


POOPDECK 12450

HATCHES

FORECASTLEDECK

ER PLATFORM 6450

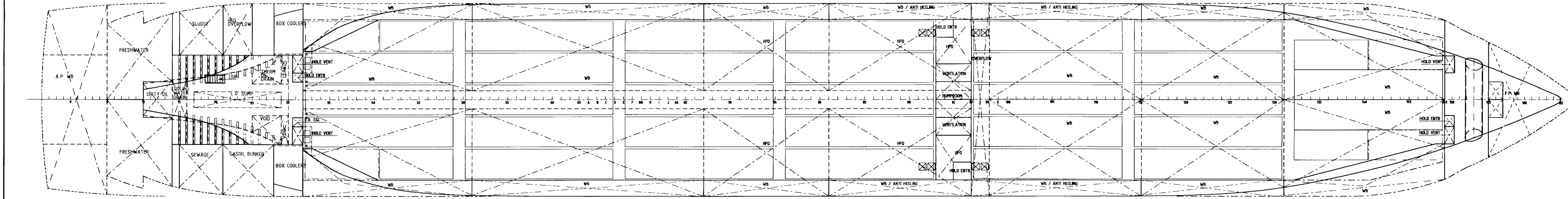


MAINDECK 10150

PRINCIPAL PARTICULARS

Length o/a	129.45 m
Length b.p.p	123.49 m
Breadth mld	15.85 m
Depth mld	10.15 m
Draught mld	7.393 m
Deadweight	9000 t
Capacities Holds	12787 m <sup>3</sup>
HF O incl day-and settingtanks	568 m <sup>3</sup>
Ballast Water	3665 m <sup>3</sup>
Fresh Water	76 m <sup>3</sup>
Gasoil incl daytank	60 m <sup>3</sup>
Containers hold	262 TEU
Containers hatches	300 TEU
Containers total	562 TEU
Engine Output	4320 kW
Speed 90% MCR full draught, no shaftgen appr	15.50 kn
Class LRS +100A1+LMC UMS Strengthened for Heavy Cargoes,	
Container Cargoes in Hold and on Hatchcovers	
Gross Tonnage	6382 GT
Nett Tonnage	3418 NT

TANKTOP 1250



D AM-SHIP-0808		DAMEN SHIPYARDS CARGOVESSELS	
MP	28-11-00	BY	DATE
C	08-06-00		
B	20-10-99		
P O Box 1 - 4200 AA Gorinchem - Holland			
Telephone +31 183 63 99 33			
Telefax +31 183 63 94 88			
Telex 25335 dame nl			
SCALE	1200	OWNER	
DRAWN BY	WK	DATE	22-06-99
APPROVED		YARD No 808	
TITLE			
GENERAL ARRANGEMENT PLAN			
ALTERATION			
No	A B C	No 0808-000-001	