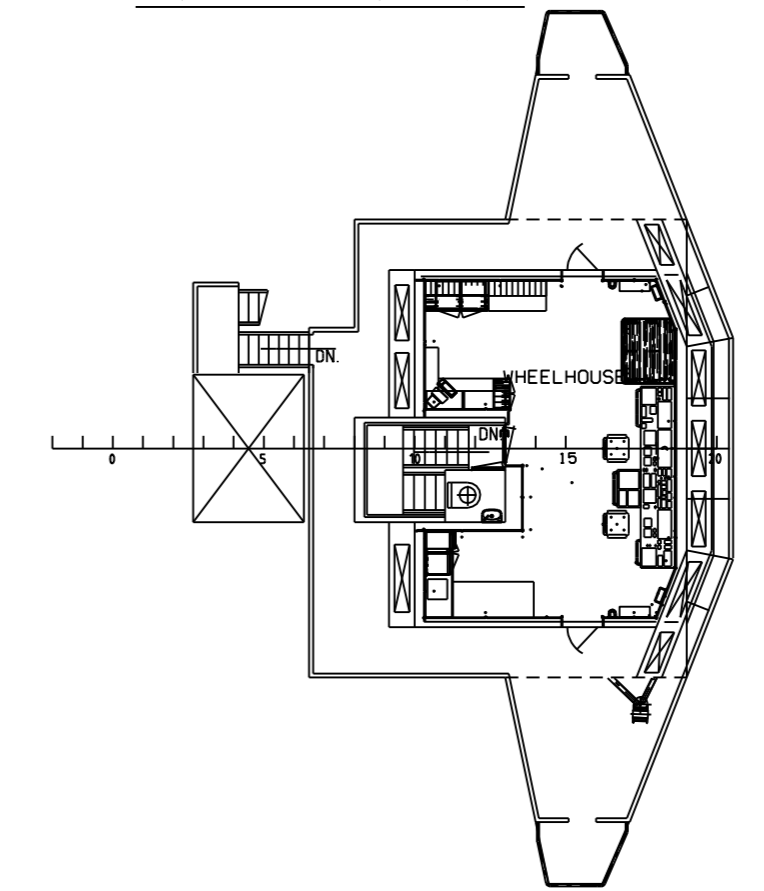
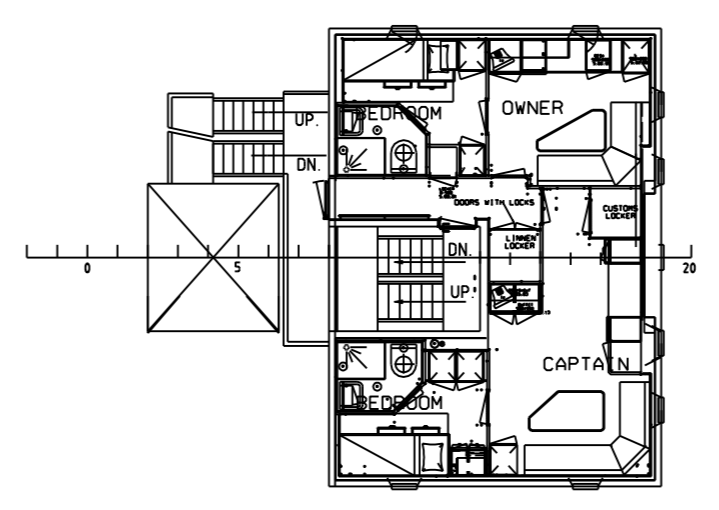
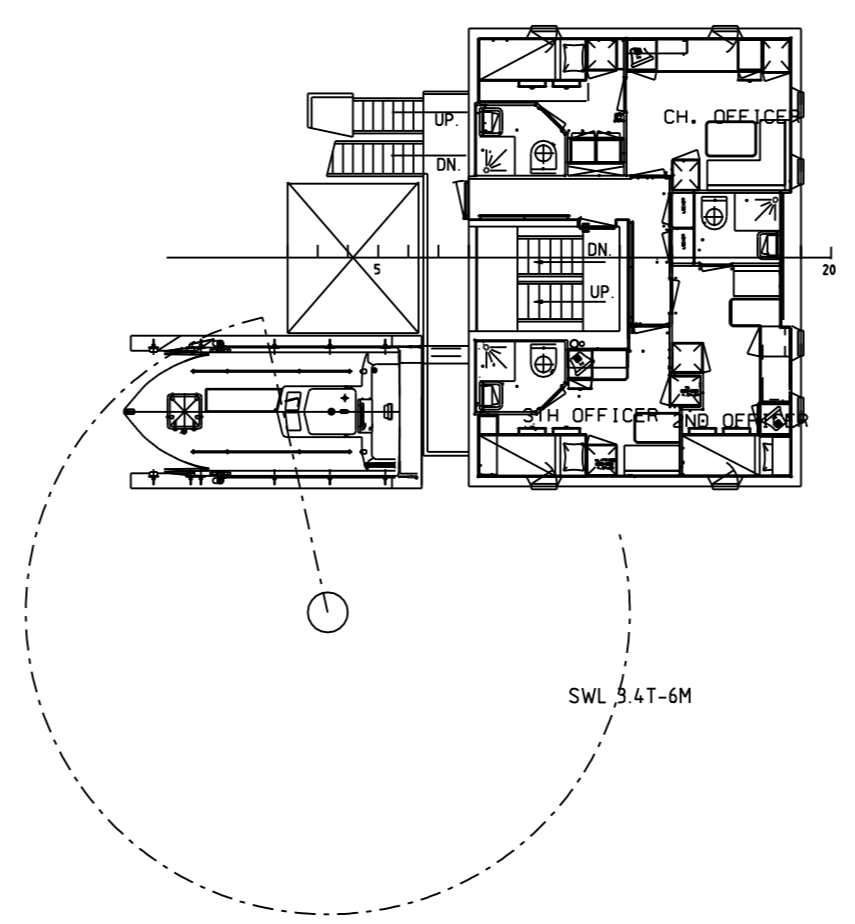
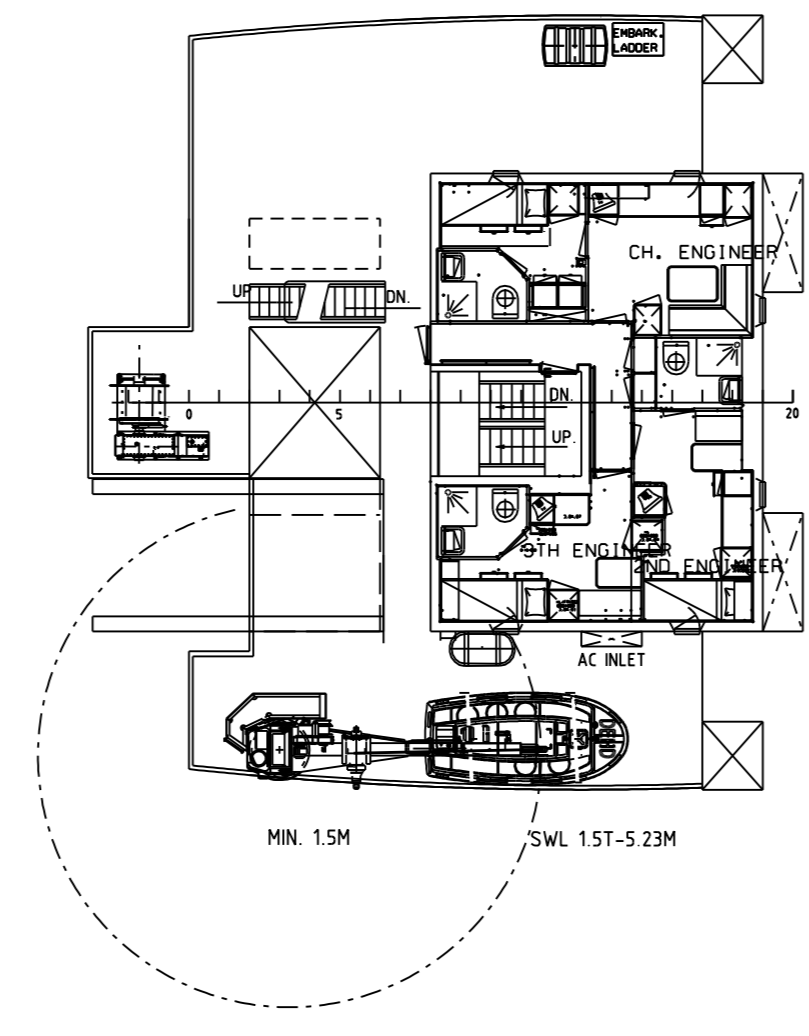


BOATDECK 15150

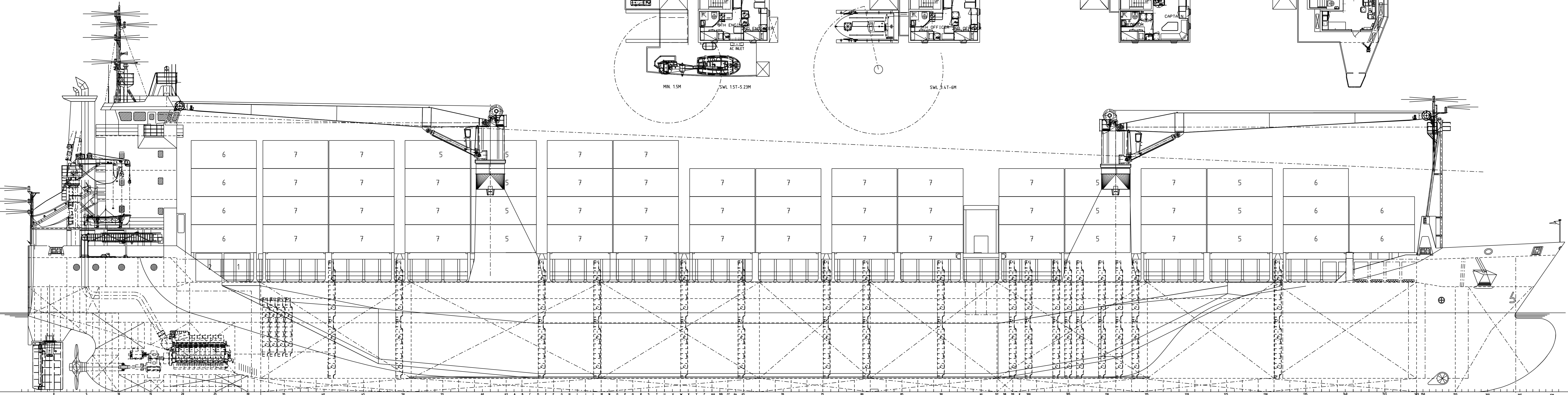
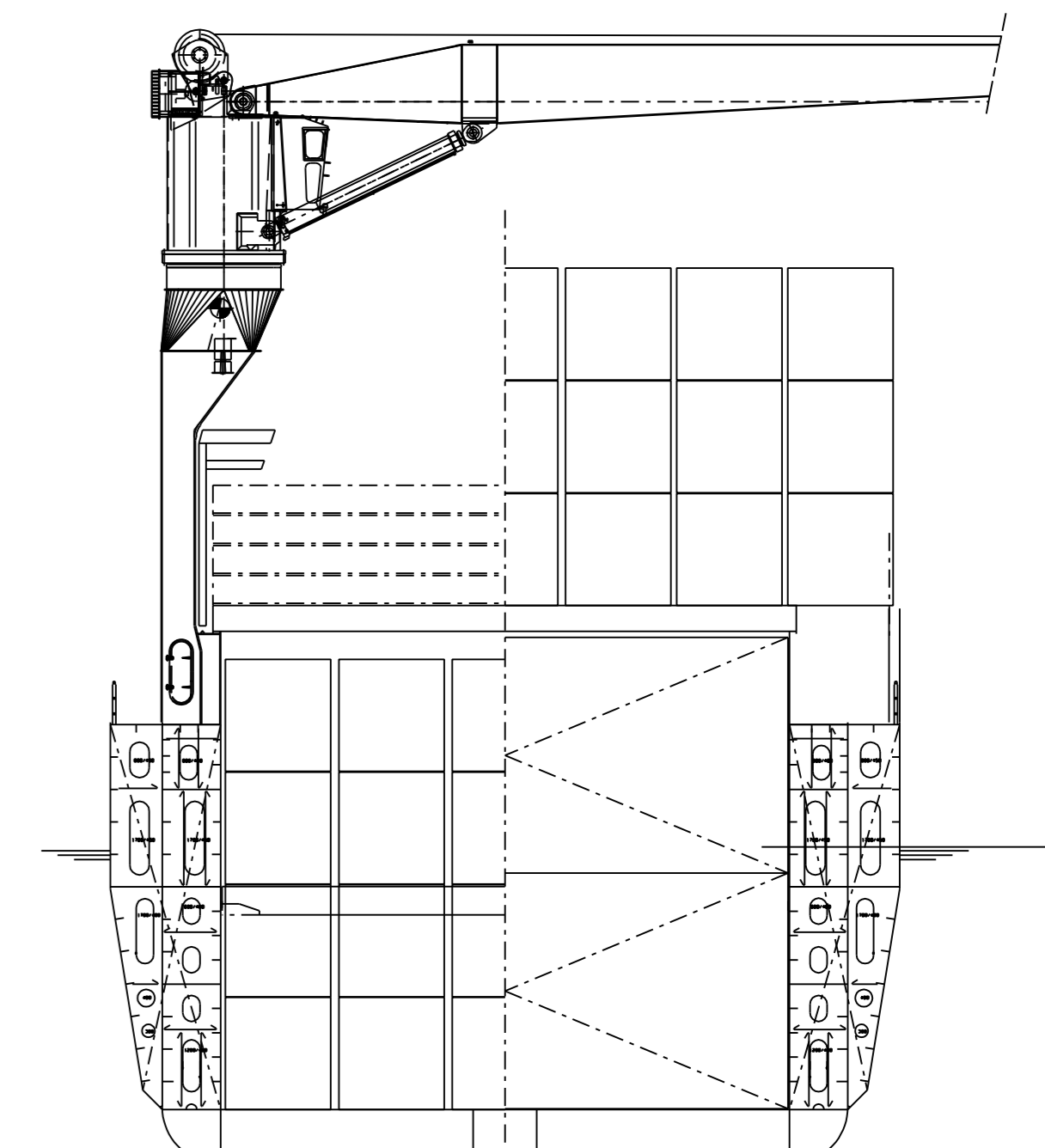
OFFICERS DECK 17850

CAPTAINS DECK 20550

BRIDGEDECK 23750



FRONT VIEW

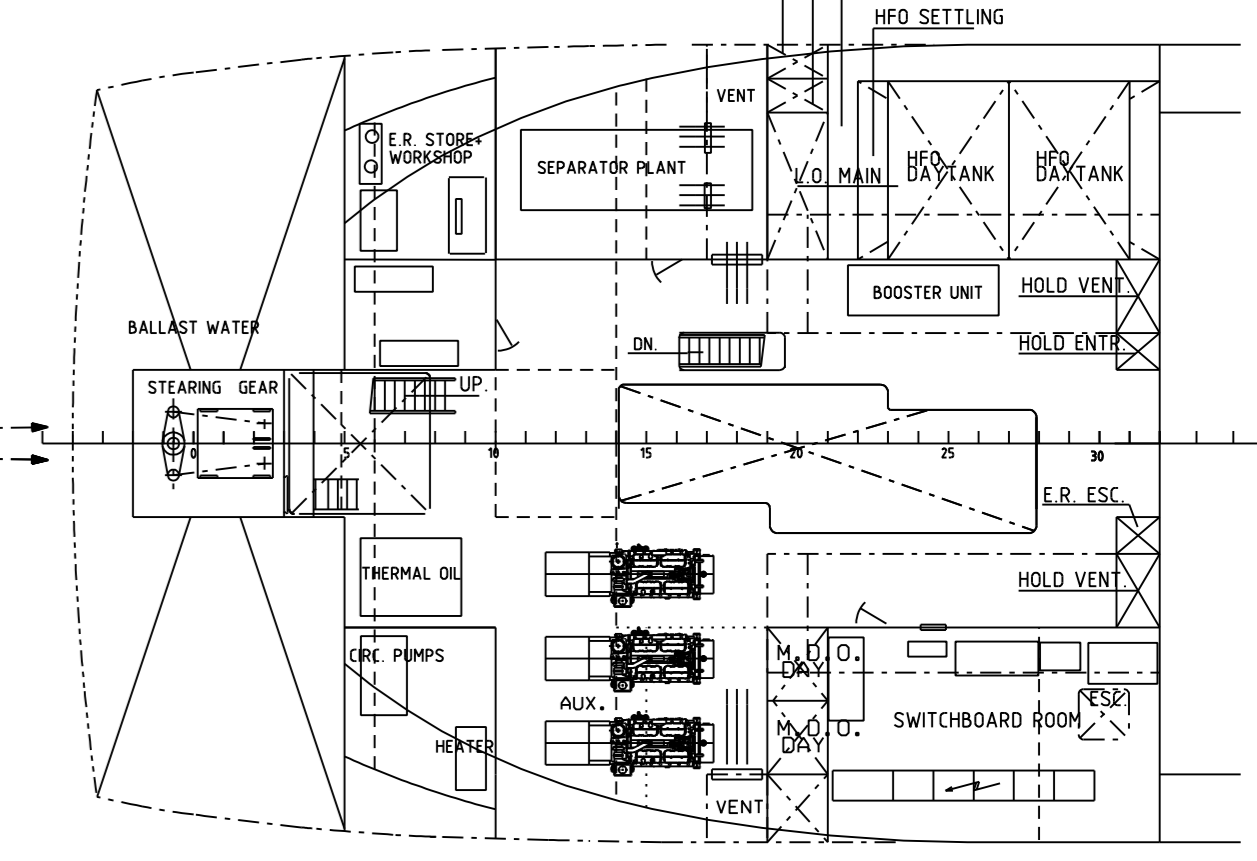
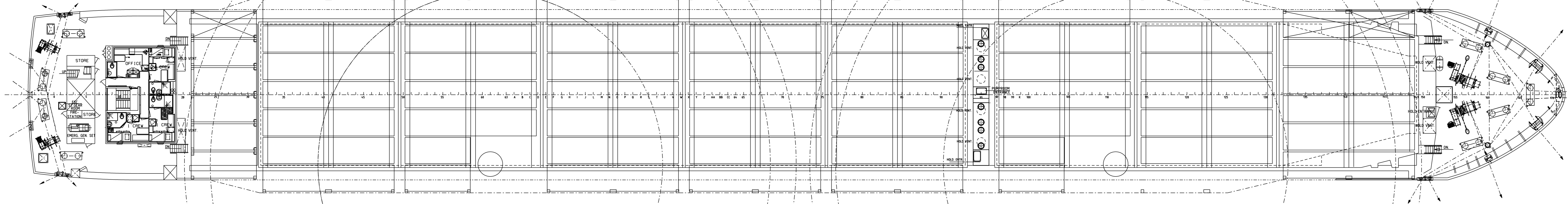


POOPDECK 12450

HATCHES

FORECASTLEDECK

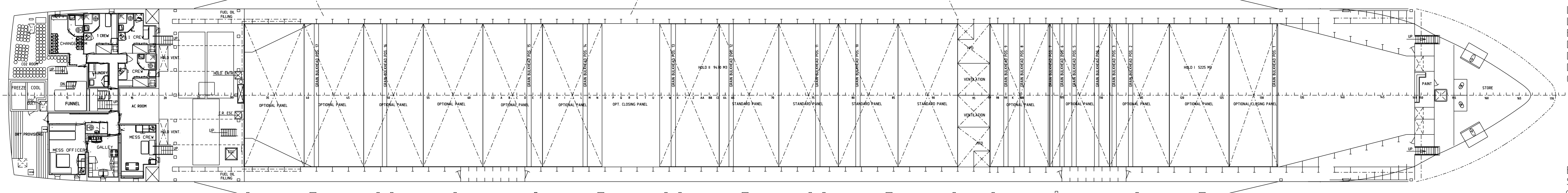
E.R. PLATFORM 6450



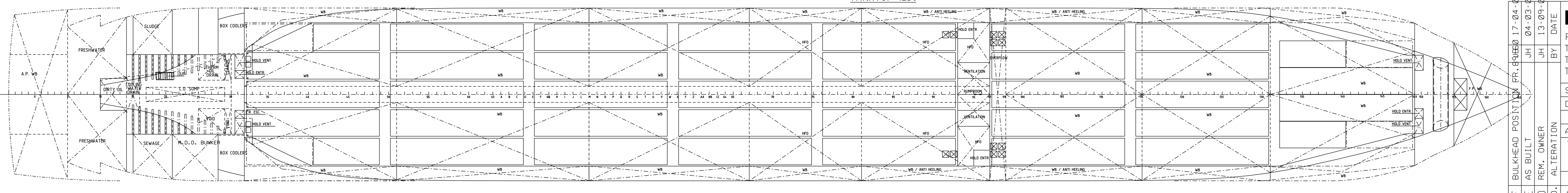
MAINDECK 10150

PRINCIPAL PARTICULARS

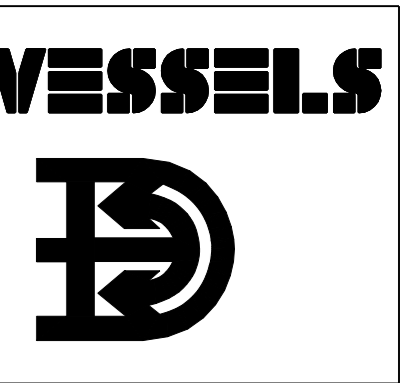
Length o.a.	142.69 m
Length b.p.p.	136.12 m
Breadth mld.	18.25 m
Depth mld.	10.15 m
Draught mld.	7.330 m
Deadweight	10610.7 t
Capacities:	
Holds	appr. 14695 m3
H.F.O. incl. day- and settling tanks	appr. 618 m3
Ballast Water	appr. 5367 m3
Fresh Water	appr. 76 m3
M.D.O. incl. day tank	appr. 60 m3
Containers hold	302 TEU
Containers hatches	371 TEU
Containers total	673 TEU
Engine Output	4320 kW
Speed 90% MCR full draught, no shaftgen.	appr. 14.80 kn
Class: LRS +100A1 +LMC UMS Strengthened for Heavy Cargoes,	
Container Cargoes in Hold and on Hatchcovers	
Gross Tonnage	7406 GT
Nett Tonnage	3859 NT



TANKTOP 1250



E. BULKHEAD POSITION FR. 81400 17-04-02	
E. AS BUILT JH 04-03-02	
D. REM. OWNER JH 13-09-01	
NO. ALTERATION BY DATE	
F. BULKHEAD POSITION FR. 81400 17-04-02	
E. AS BUILT JH 04-03-02	
D. REM. OWNER JH 13-09-01	
NO. ALTERATION BY DATE	
SCALE 1 : 150 OWNER	
DRAWN BY DSH DATE 12-10-00	
APPROVED YARD NO. 0819/0820	
TITLE	
GENERAL ARRANGEMENT PLAN	
ALTERATION	
NO. 0819-000-001	



P.O. Box 1 - 4200 AA Gorinchem - Holland  
 Telephone +31 183 63 99 33  
 Telefax +31 183 63 94 88  
 Telex 25335 dame nl