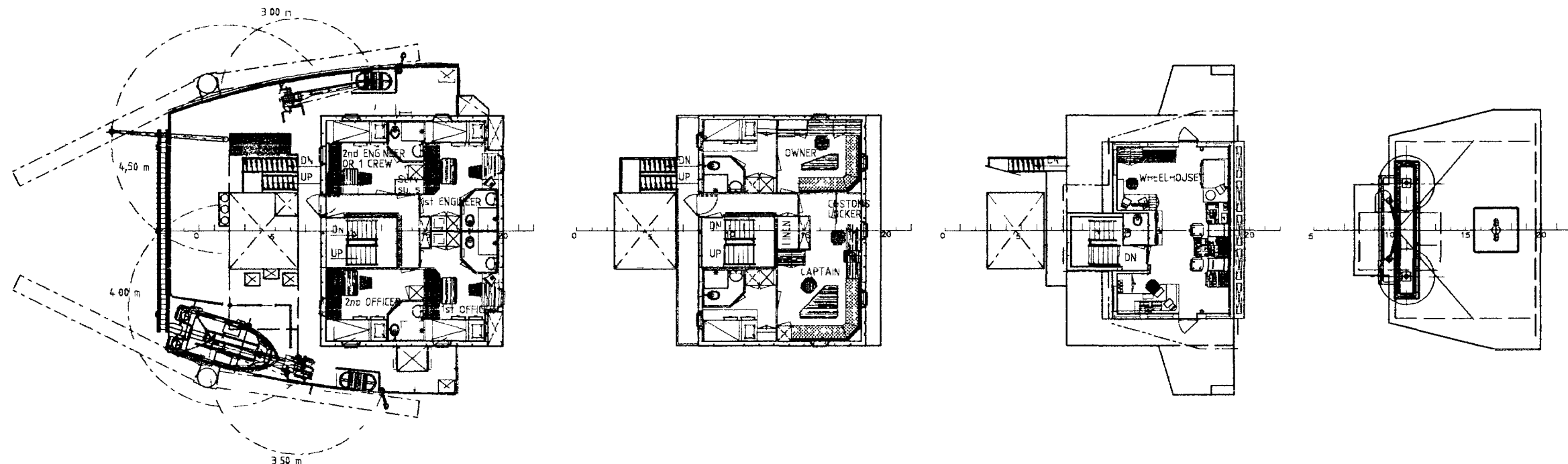
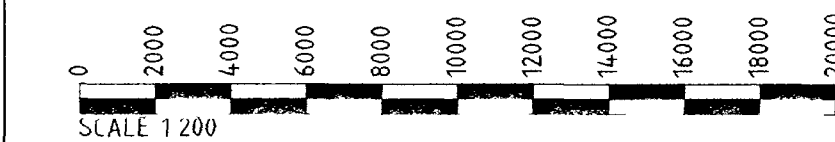


BOATDECK

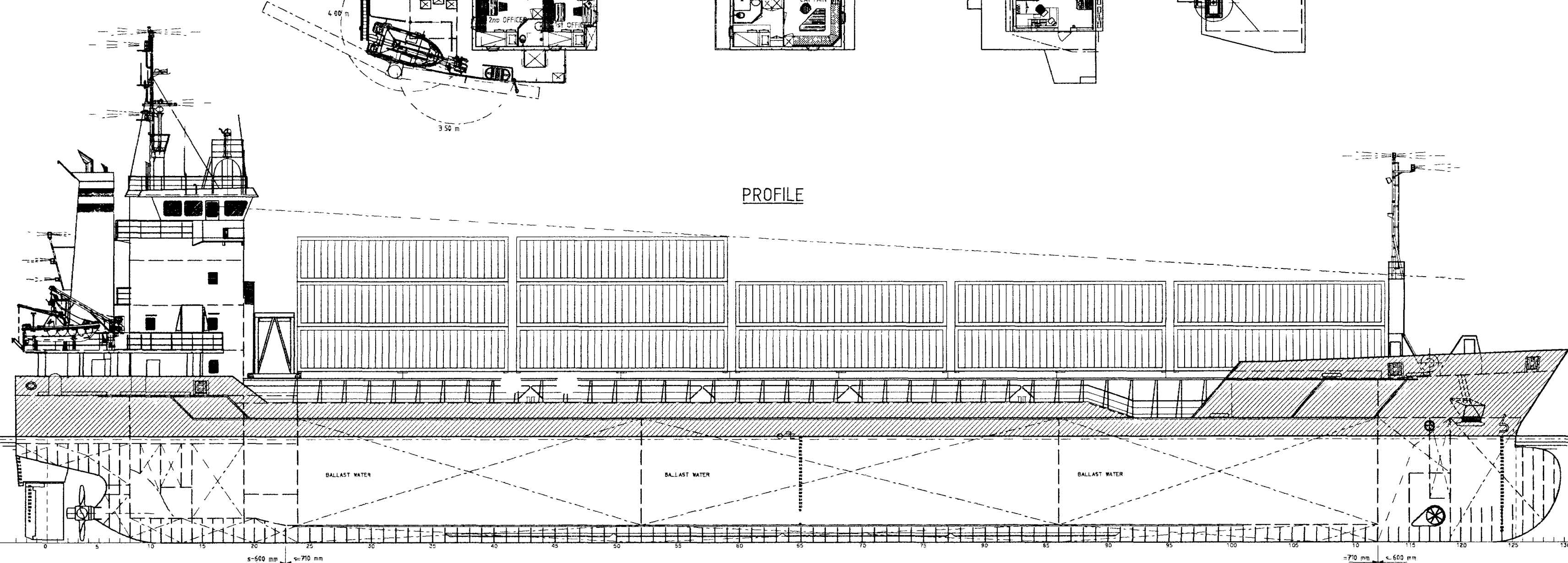
CAPTAINSDECK

BRIDGEDECK

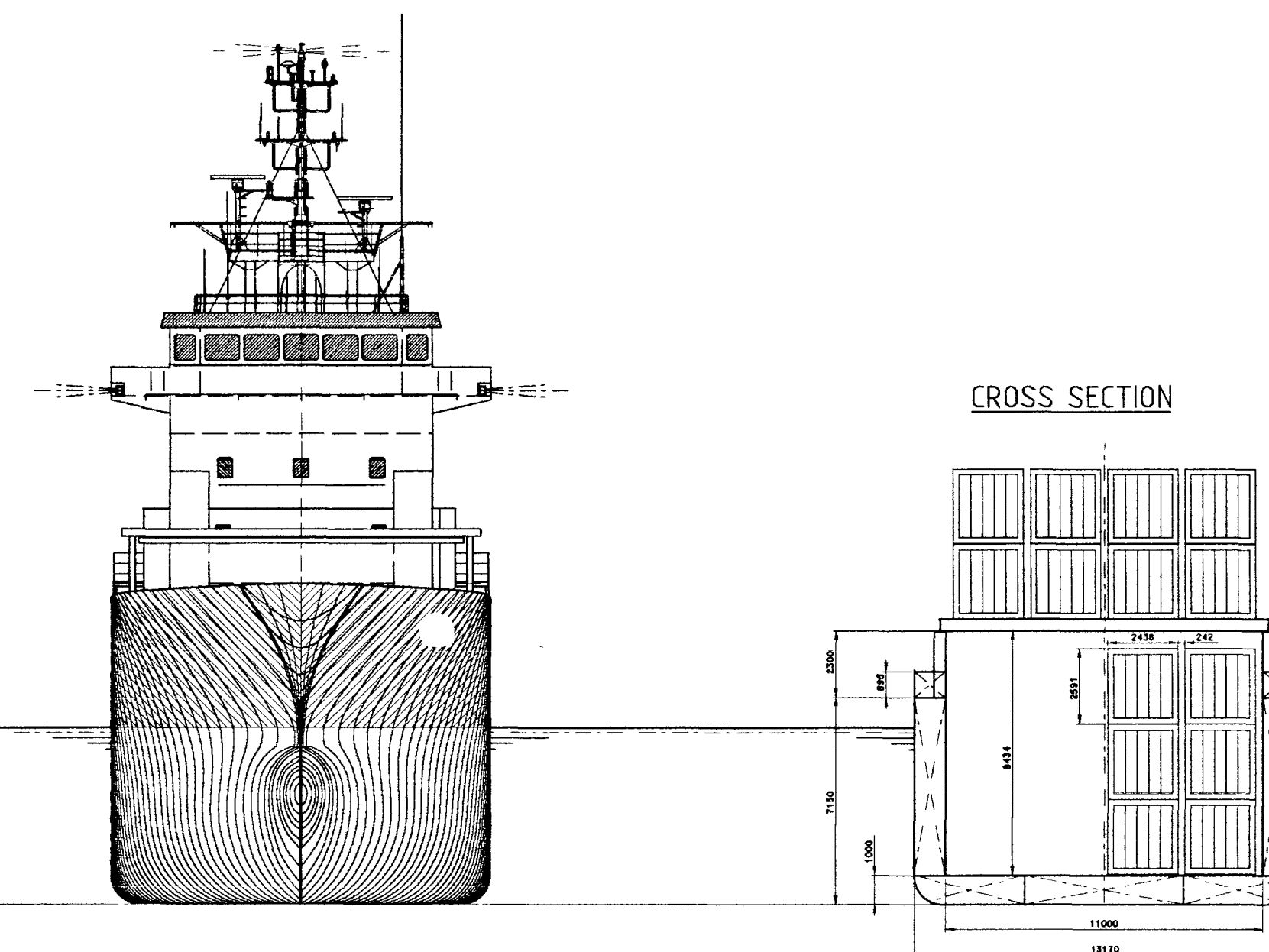
TOPDECK



PROFILE



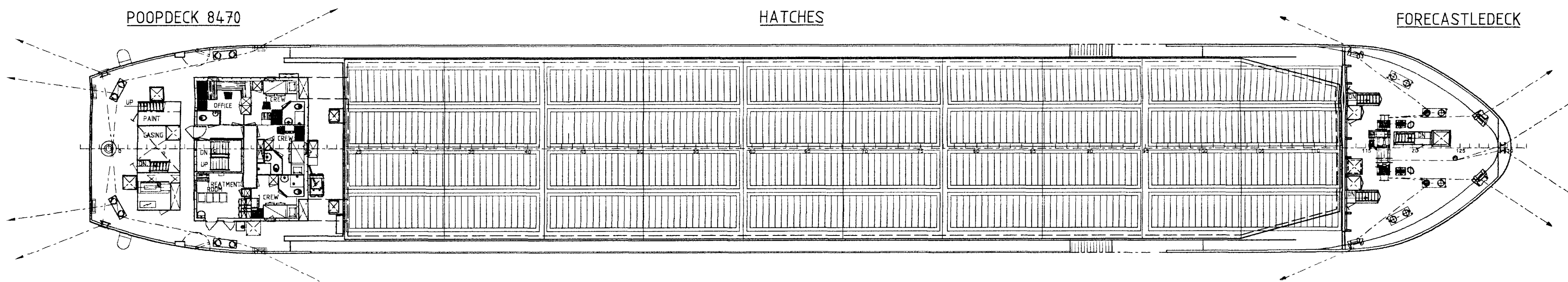
CROSS SECTION



POOPDECK 8470

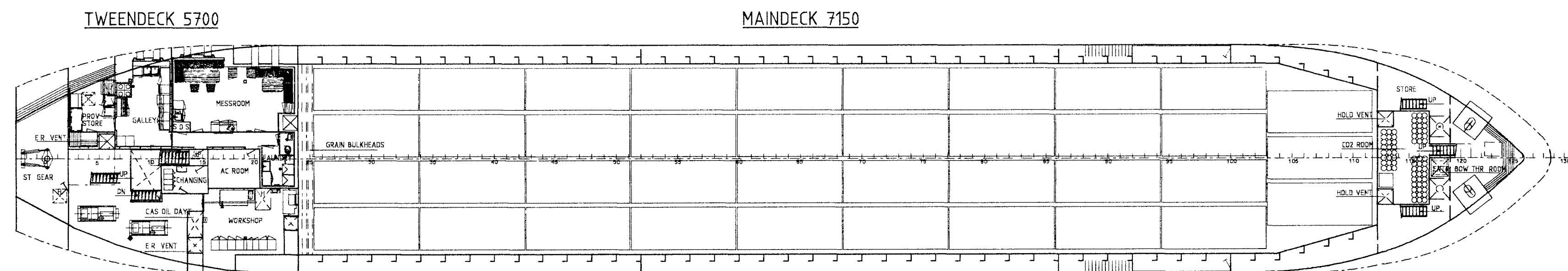
HATCHES

FORECASTLEDECK

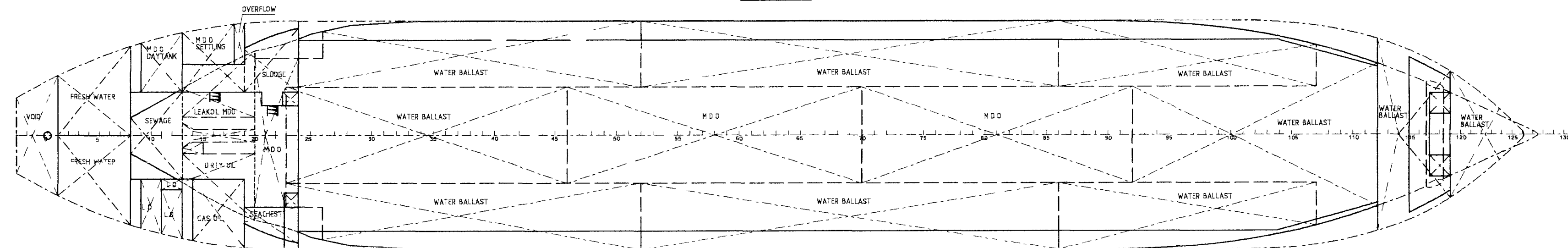


TWENDECK 5700

MAINDECK 7150



TANKTOP



PRINCIPAL PARTICULARS

| | |
|------------------------|---------------------------------|
| LENGTH OVER ALL | 89 90 M |
| LENGTH BETWEEN PERPEND | 84 99 M |
| BREADTH MOULDED | 13 17 M |
| DEPTH TO MAINDECK | 7 15 M |
| DRAUGHT MLD. | 6.120 M |
| DEADWEIGHT | 4610 T |
| CAPACITIES | |
| HOLD | 5718 M3 |
| FUEL OIL | 220 M3 |
| BALLASTWATER | 1627 M3 |
| FRESH WATER | 41 M3 |
| GAS OIL | 37 M3 |
| CONTAINERS | |
| IN HOLD | 117 TEU |
| ON DECK | 96 TEU |
| TOTAL | 213 TEU |
| ENGINE OUTPUT MCR | 2200 KW |
| SPEED 90% MCR MAX | DRAUGHT approx |
| GROSS TONNAGE | 2850 GT |
| NETT TONNAGE | 1575 NT |
| CLASSIFICATION | LLOYD'S +100A1 +LMC, UMS ICE 1C |

| | | | | | |
|---|----------|-------|----------|----|------------------|
| BC | 22-09-97 | JH | 08-08-97 | BY | DATE |
| DAMEN SHIPYARDS HOOGEZAND | | | | | |
| Scheepswervenweg 13 PO Box 79 9600AB Hoogezand, HOLLAND Tel: 0598-380022 Fax: 0598-394863 | | | | | |
| SCALE | | 1.200 | OWNER | | SCHONING |
| DRAWN BY | | DSH | DATE | | 08-10-96 |
| | | | YARD No | | 727 |
| APPROVED | | | | | |
| TITLE | | | | | |
| GENERAL ARRANGEMENT | | | | | |
| ALTERATION | | | | | |
| No | | | | | 0727 - 000 - 001 |